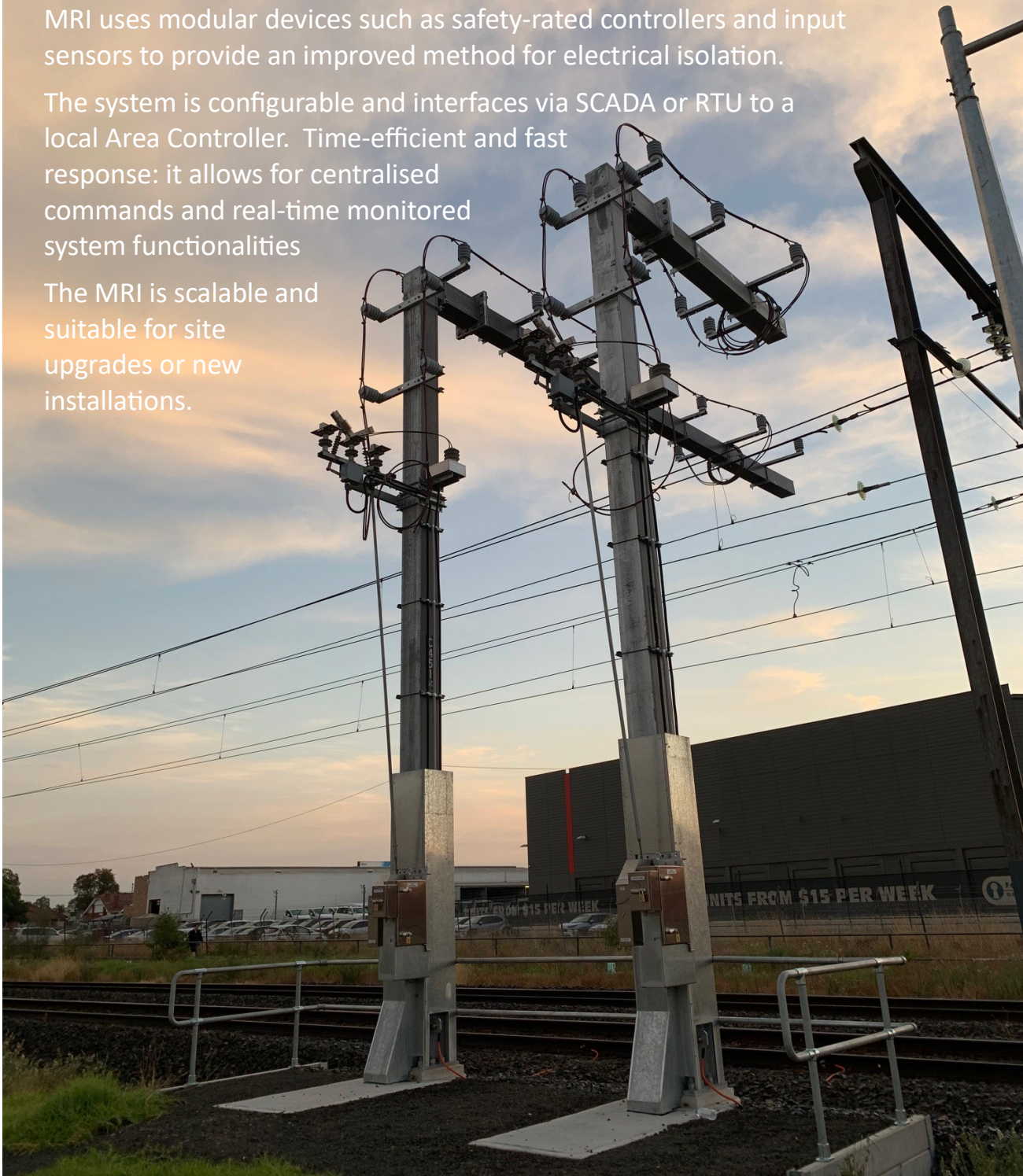


# Modular Remote Isolation System

The Modular Remote Isolation (MRI) system provides safe fully remote operation of critical traction network isolation switches. The MRI uses modular devices such as safety-rated controllers and input sensors to provide an improved method for electrical isolation.

The system is configurable and interfaces via SCADA or RTU to a local Area Controller. Time-efficient and fast response: it allows for centralised commands and real-time monitored system functionalities

The MRI is scalable and suitable for site upgrades or new installations.



Modular Remote Isolation System (MRI)

4140

e: [sales@ar-tech.com.au](mailto:sales@ar-tech.com.au)

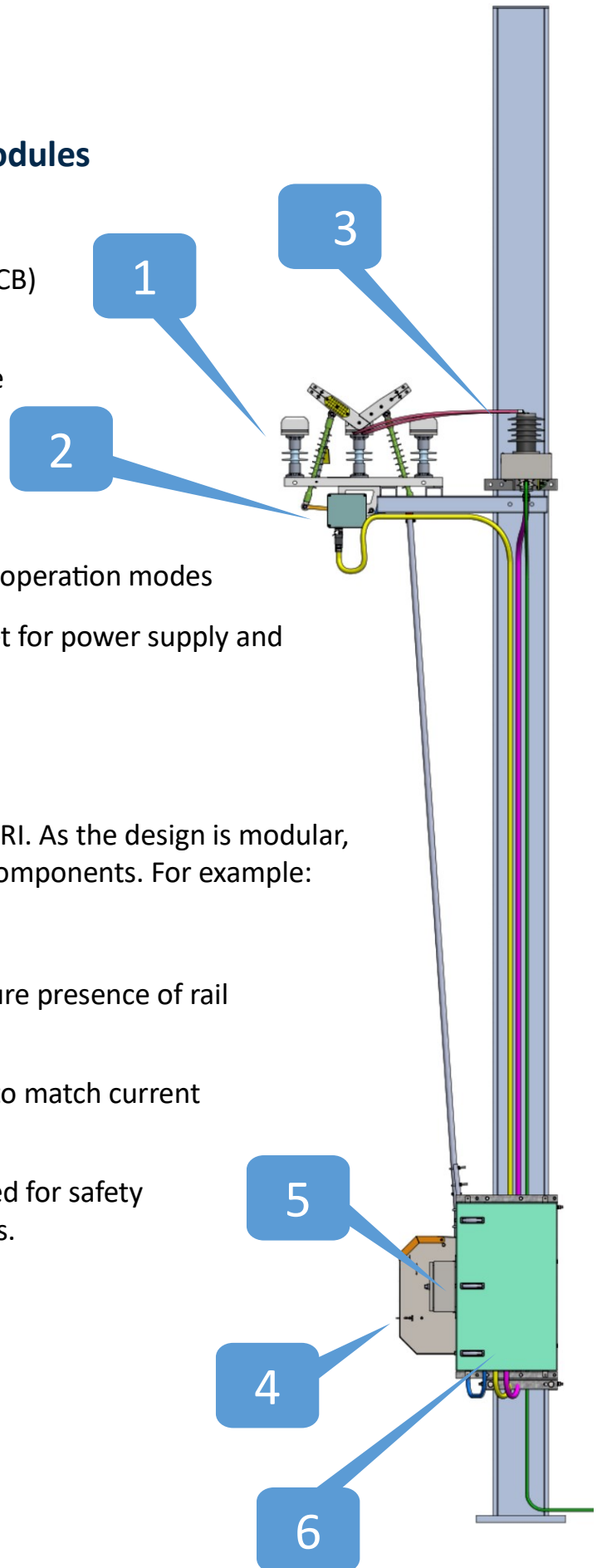
p: +61 2 9482 5710

w: [ar-tech.com.au](http://ar-tech.com.au)



## Typical Configuration of the Modules

- 1) 3-position DC **Disconnecter**
- 2) Sensor: **Auxiliary Contact Box (ACB)** reports contact blade position
- 3) Sensor: **Voltage** monitoring of the overhead wire.
- 4) **Actuator** provides motorised drive to the isolator
- 5) **Control Panel** for local or remote operation modes
- 6) **System Interface Box (SIB)** cabinet for power supply and control logic.



Displayed here is a typical setup of a MRI. As the design is modular, there are options available for all the components. For example:

- Voltage and current sensor
- Negative Integrity Monitor to assure presence of rail connected cable
- Control Panel can be customised to match current switch operations.
- An electric Danger Tag can be fitted for safety assurance and indication purposes.