

Features:

- Safe logical manual operation
- Low resistance, maintenance-free contacts
- Ample thermal and electrical capacity
- Robust construction supports large cables and heavy-handed operation

Applications:

- Aerial mast mount, LH and RH
- Outdoor or indoor
- Trackside, Section Hut, Depot Roads, Remote Isolation

Options:

- Surge Protection
- Interlocking
- Field-upgradeable for Motorised Operation
- Auxiliary Contacts for Blade Position Indication
- SCADA Interface

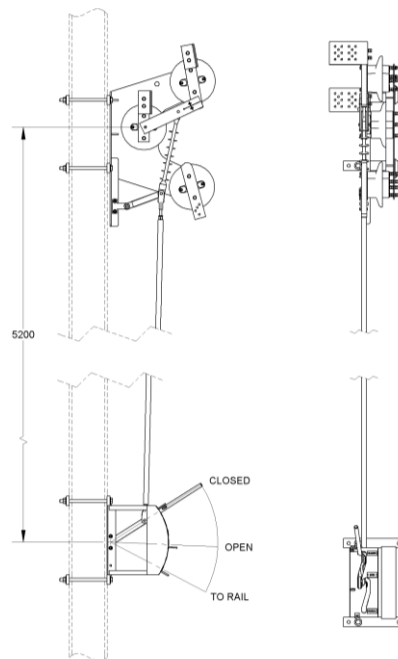
Australian Rail Technology is the sole supplier of 1500V DC isolators for the entire Sydney Trains network in Australia. We also supply 600V DC isolators for Melbourne and New Zealand.

e: sales@ar-tech.com.au
p: +61 2 9482 5710
w: ar-tech.com.au
XP2053 r3



Technical Data

Description	Unit	Value
Operating Voltage	V _{dc}	1500V DC (Nominal)
Continuous Isolating Switch Rating	A	3000
Continuous Rail-connecting Switch Rating	A	3000
Maximum Temperature Rise of Isolating Switch	°C	60
Maximum Temperature Rise of Rail connecting Switch	°C	60
2 hour Cyclic Load Test		5600A for 2.5min, 1600A for 9.5min
I ² t Let-through	A ² s	4,500,000A ² s
Insulators – PF Dry Flashover voltage	kV	97
Insulators – PF Wet Flashover voltage	kV	53
Insulators – creepage	mm	370



Part Number

Part Number	Description	Weight (kg)
XP2053BAO	1500VDC Isolating and Rail Connecting Switch, 3 Position	195
XP2053BAOS	1500VDC Isolating and Rail Connecting Switch, 3 Position with Surge Arrestor	196

e: sales@ar-tech.com.au

p: +61 2 9482 5710

w: ar-tech.com.au

XP2053 r3